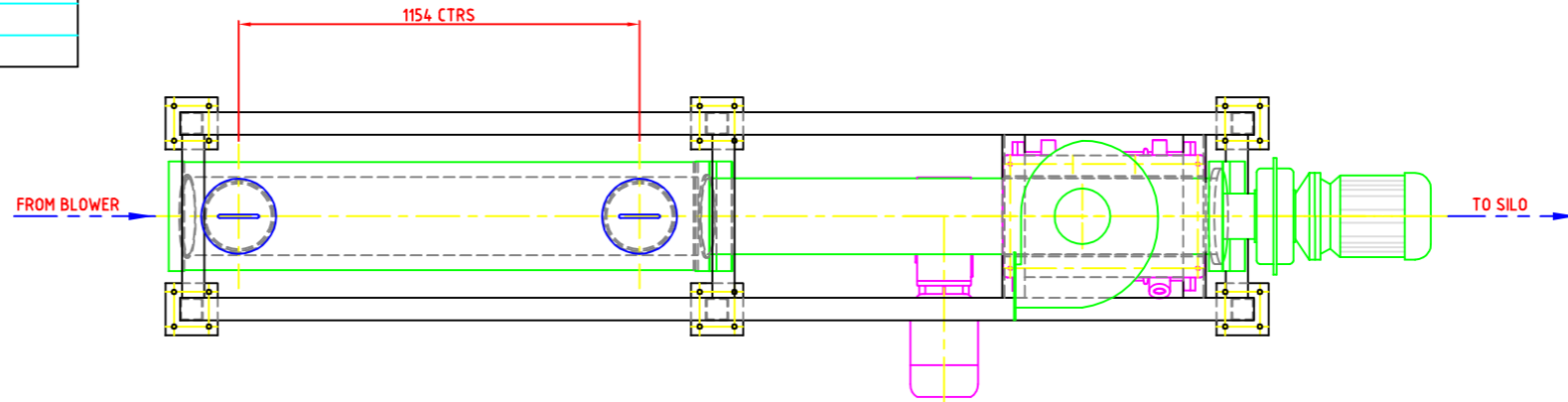
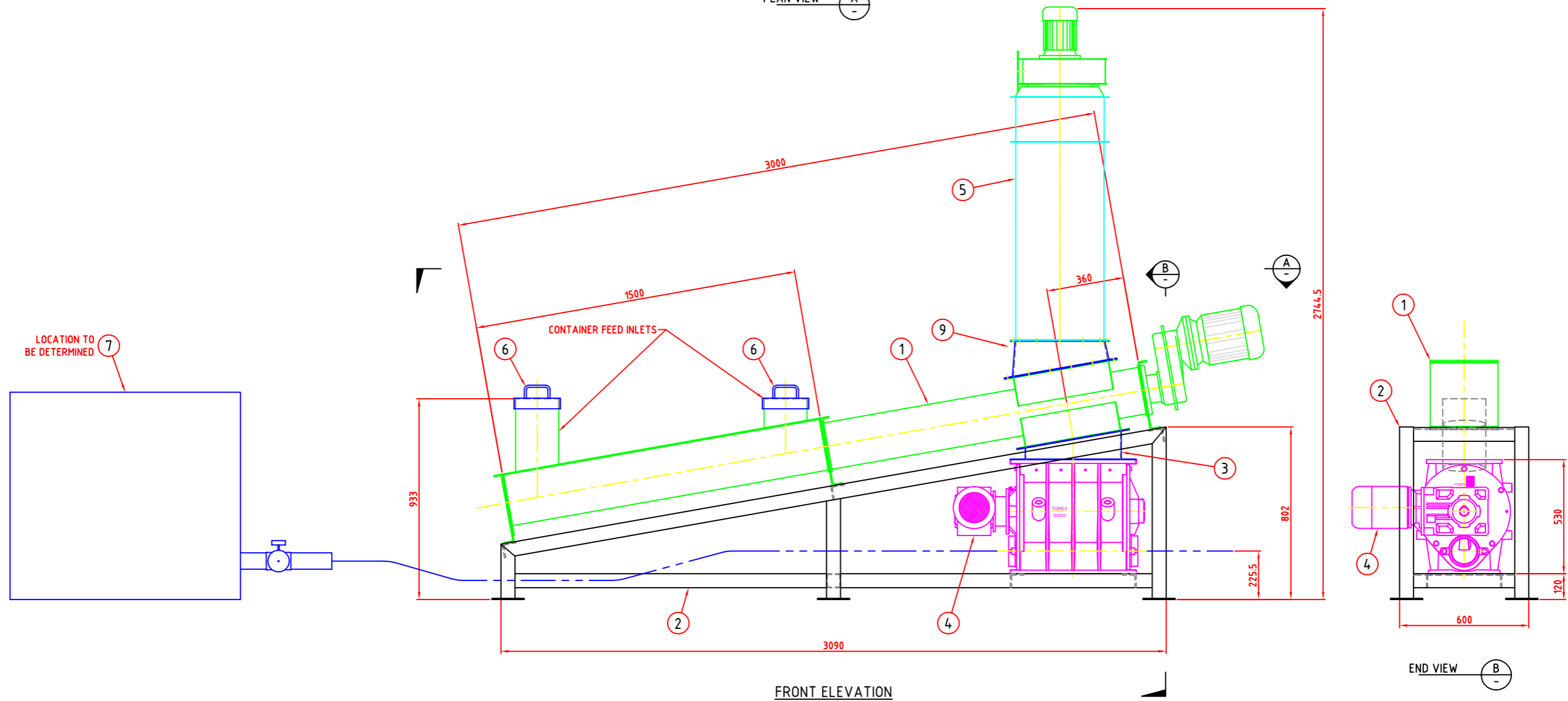


ITEM QTY	DESCRIPTION	PART OR DWG No.	REMARKS
1 1	SCREW CONVEYOR - SU219	WV11778-M002	
2 1	SUPPORT FRAME	WV11778-M003	
3 1	TRANSITION FLANGE	WV11778-M004	
4 1	BLOW THROUGH ROTARY VALVE - RVS 35	WV11778-M005	
5 1	DUST COLLECTOR - FNC1J06	WV11778-M008	0.75 kW FAN
6 2	INLET LID	WV11778-M006	
7 1	BLOWER	-	
8 1	DUST COLLECTOR MOUNTING FLANGE	WV11778-M007	

RevNo	Revision note	Date	Signature	Checked



PLAN VIEW (A)



FRONT ELEVATION

END VIEW (B)

E DUST COLLECTOR & MOUNT (ITEMS 5 & 9) MODIFIED.

18.10.05

	INQUIP PTY LTD U5 - 5 BENEFICIAL WAY WANGARA WA 6065 PO BOX 1343 WA 6947 TEL 08 9303 4966 FAX 08 9303 4977 www.inquip.com.au	Designed by	Checked by	Approved by - date	Filename	Date	Scale
		THIS DRAWING REMAINS THE PROPERTY OF INQUIP PTY LTD AND MUST NOT BE USED OR COPIED BY ANY PARTY WITHOUT THE EXPRESS PERMISSION OF INQUIP PTY LTD		CONTAINER UNLOADING SYSTEM TYPICAL ARRANGEMENT		Drawing Number D216-0014-GA01	Edition 1
ALL DIMENSIONS IN MM UNLESS OTHERWISE NOTED							