

Screenings Washing and Compaction Units WASTECOM™ CLE



SELF-CLEANING, STURDY & MULTI-FUNCTION

WASTECOM™ CLE is an innovative self-cleaning compactor designed for compaction of screenings.

By means of special features, WASTECOM™ CLE is used for reduction of screenings and a large variety of waste materials from industrial processes.

WASTECOM™ CLE consists of a drainage chamber with a hopper, a compacting unit and a special flush end pipe for discharging the compacted material.

Thanks to the particular design of the screw, screened fibrous materials can be easily handled. Moreover, the drainage chamber made from SINT™ engineering polymer enables self-cleaning and self-lubrication of both drainage and compaction chamber.

Technical Features

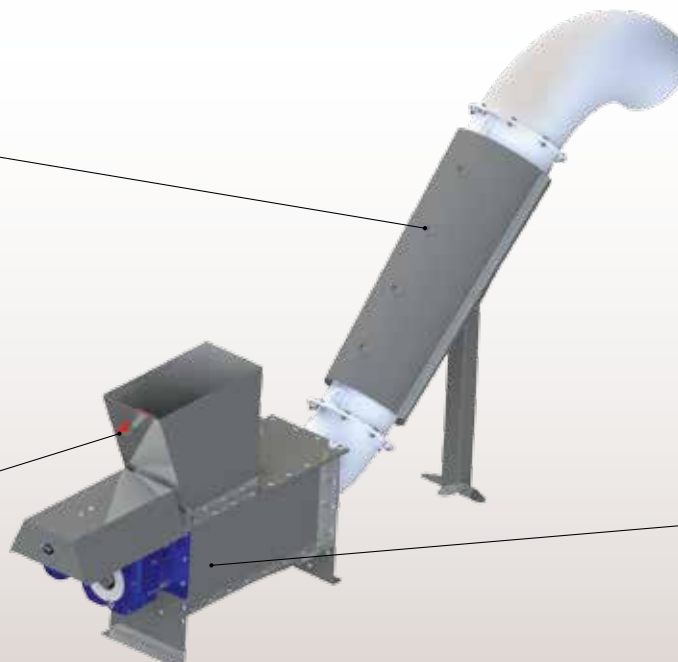
- Fabricated parts entirely manufactured from 304 L / 316 L SS
- Modular design
- Jagged Flight manufactured from 304 / 316 SS or special high resistance steel
- Liner made from SINT™ engineering polymer
- Small footprint
- ATEX GAS II motors available



Emergency
Fluidisation Nozzles



Washing



Engineered
Screw Conveyor



SINT®
Drainage Module

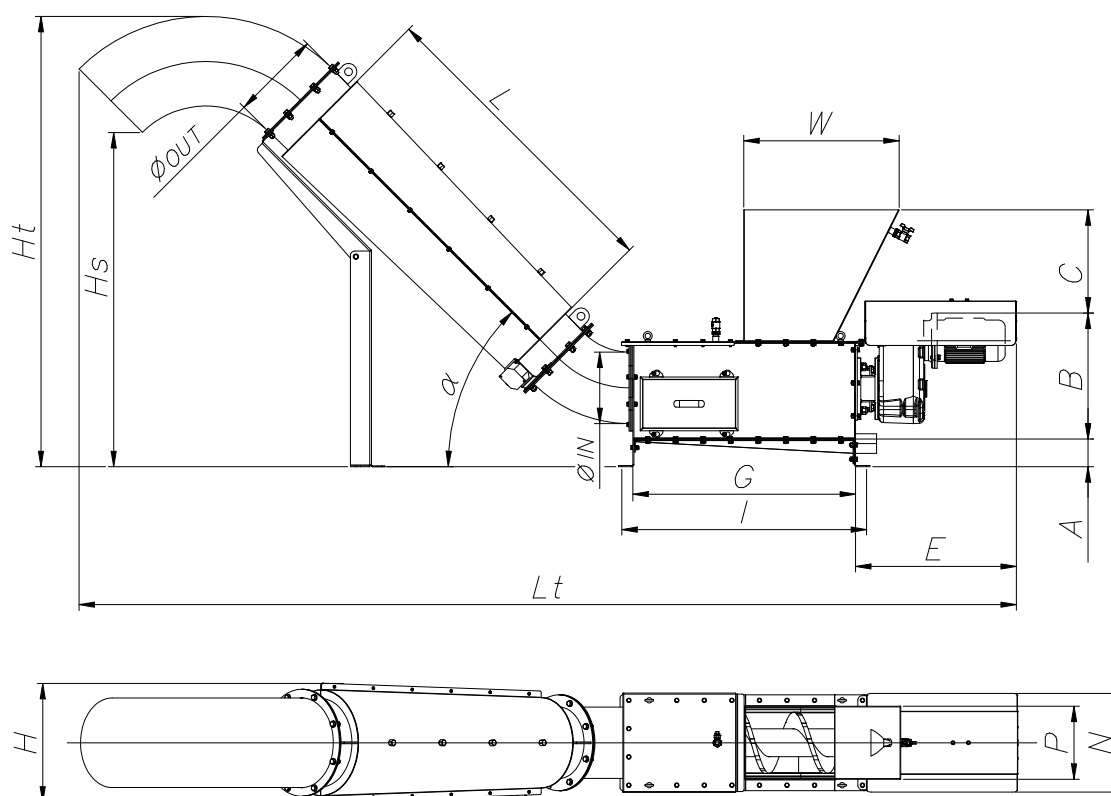
MODEL	Solids Flow rate (m³/h)	Installation power kW	Hopper capacity (l)
CLE 200	1.5 - 2.0	1.5	70 ÷ 140
CLE 300	2.5 - 3.0	2.2	100 ÷ 200
CLE 400	4.0 - 4.5	3.0	200 ÷ 330

Benefits

- ✓ Durable heavy-duty shafted screws;
- ✓ Self-cleaning drainage made from SINT™ engineering polymer;
- ✓ Economic transportation and installation
- ✓ Abatement of organic volatile pollutants
- ✓ Odour lowering
- ✓ Silent operation



Overall Dimensions



Type	A	B	C	E	Ht	Hs	G	L	Lt	N	P	W	Ø IN	ØOUT
CLE 200	180	571	600	550	2,080	1,600	1,000-1,500	1,880	4,100-4,600	350	177	700-1,200	219	323
CLE 300	180	571	600	650	2,050	1,510	1,000-1,500	1,500	4,100-4,600	450	277	700-1,200	323	406
CLE 400	180	571	600	650	2,300	1,750	1,250-1,750	1,850	4,500-5,250	550	377	950-1,200	406	508

For reference only: for detailed drawings please contact the manufacturer

Dimensions in mm

Accessories

- Solenoid Valves

Applications



063002389 May 2015 Rights reserved to modify technical specifications.

