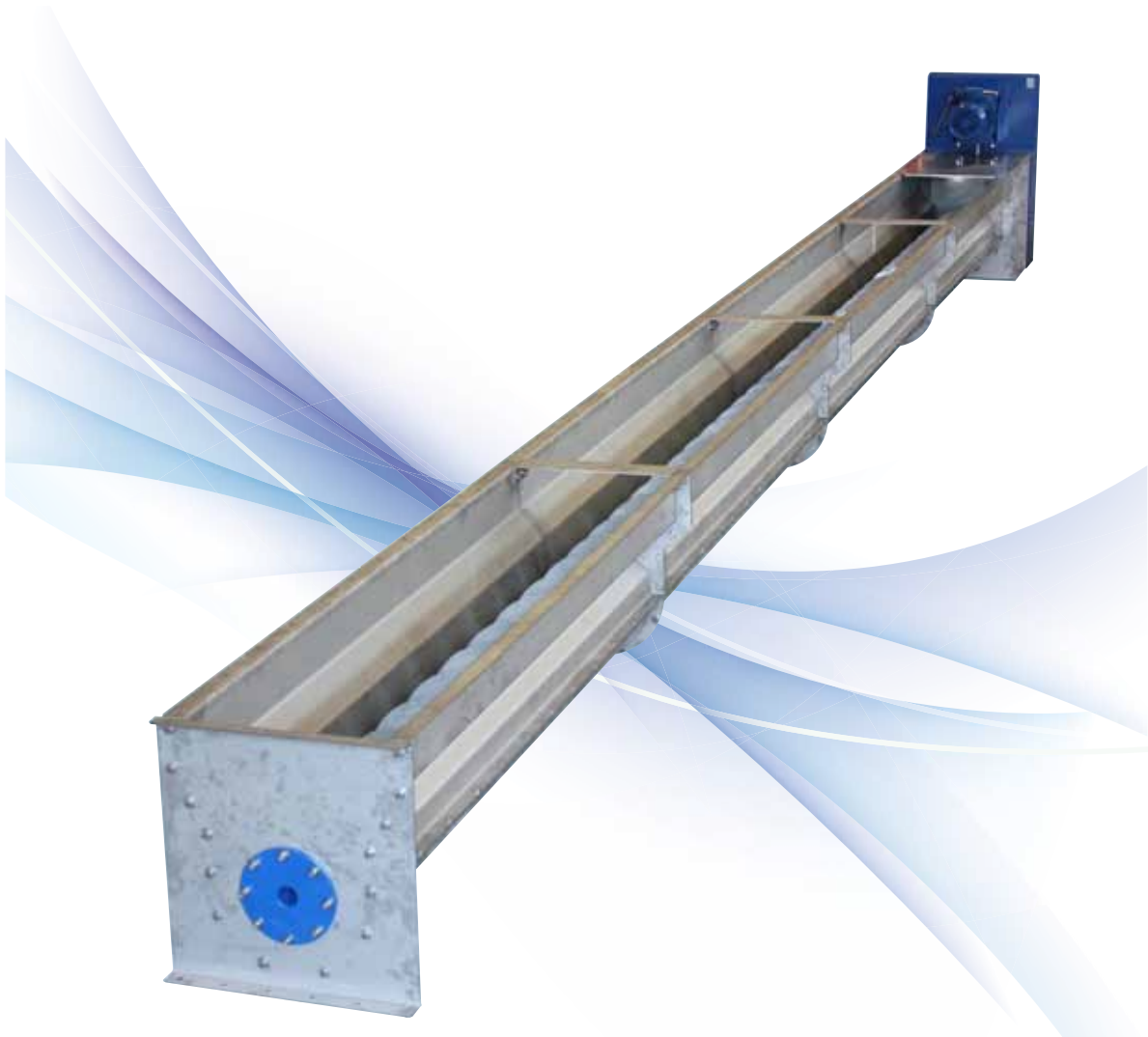


## Modular TUS Screw Conveyors for Animal By-Products CLO / CLOS



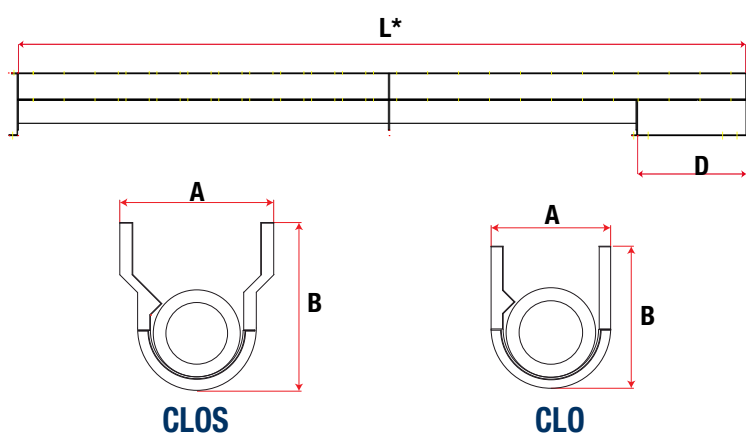
The CLO and CLOS Screw Conveyors are manufactured from carbon steel or stainless steel (painted or hot galvanized finishing).

Thanks to their modular TUS design, depending on the application (TUS system), the CLO and CLOS screw conveyors can be provided with different trough cross sections in various configurations to fulfill any application need.

The screw conveyors consist of an outlet spout, a power transmission with a special compact gear reducer and a shafted or shaftless screw which is flanged on an end bearing assembly. The screw is fitted inside a trough having easily replaceable slide bars or a liner attached on its bottom.

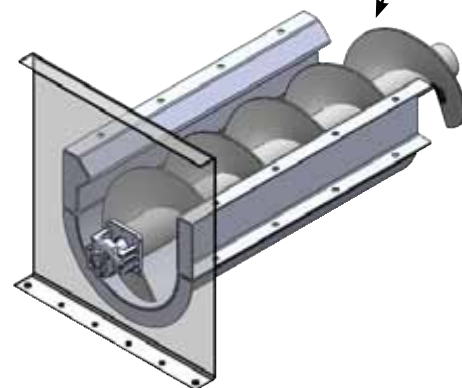
Designed for continuous heavy-duty, CLO and CLOS screw conveyors play an important part in handling slaughtering wastes such as bones (entire or ground) hooves, skulls or fats.

## Dimensions and versions available



Diameter	A		B		D
	CLO	CLOS	CLO	CLOS	
200	311	433	446	341	200 x 200
250	301	533	521	711	250 x 250
300	433	655	628	833	300 x 300
350	483	655	718	933	350 x 350
400	533	755	803	1033	400 x 400
500	653	900	993	1255	500 x 500

Material	Version
Bones (entire or broken) (Sheep, Cattle, Pigs, Horses)	CLOS
Fats	CLO
Wastes and Ground Bones	CLO
Fish	CLO
Flour	CLO



## Technical Features - Benefits

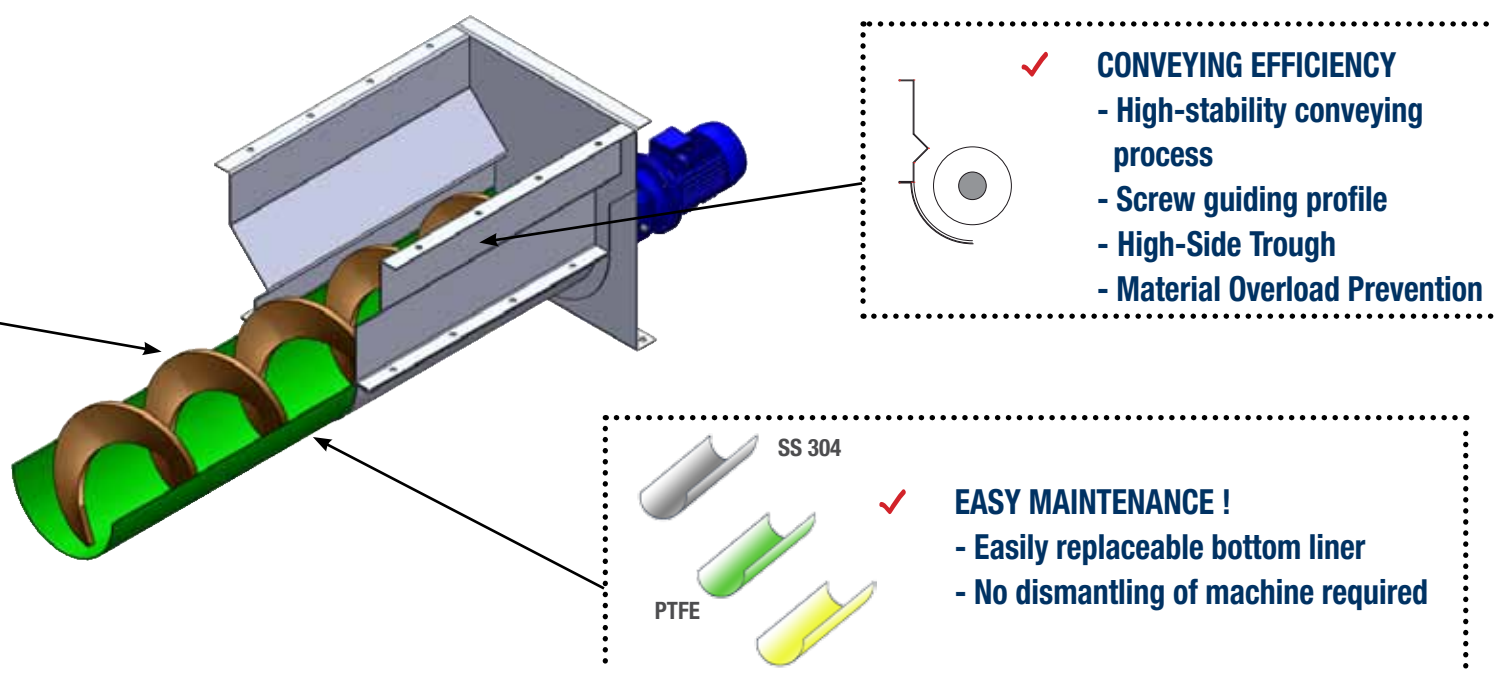
- ✓ Modular trough for optimized application
- ✓ Special trough sections to achieve high conveying efficiency
- ✓ Low maintenance thanks to the sturdy configuration and special power transmissions
- ✓ Hygienic thanks to modular design
- ✓ Finishing suitable for specific industrial applications
- ✓ Low residue

## Technical Data and Performance

Diameter	Screw Type	CLO	CLO	CLO	CLOS	CLOS	CLOS
		SSC	Tube	SS tube	SSC	Tube	SS tube
200	Throughput	3.5	6	6	3.5	6	6
	Length (L)*	9,000	6,500	6,000	9,000	6,500	6,000
250	Throughput	5.9	8	8	5.9	8	8
	Length (L)*	12,000	6,500	6,000	12,000	6,500	6,000
300	Throughput	7.6	12	12	7.6	12	12
	Length (L)*	15,000	6,500	6,000	15,000	6,500	6,000
350	Throughput	10.2	16	16	10.2	16	16
	Length (L)*	15,000	6,500	6,000	15,000	6,500	6,000
400	Throughput	11.9	22	22	11.9	22	22
	Length (L)*	12,000	8,000	6,000	12,000	8,000	6,000
500	Throughput	18.1	36	36	18.1	36	36
	Length (L)*	9,000	8,000	6,000	9,000	8,000	6,000

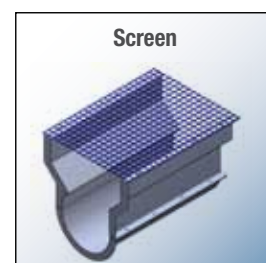
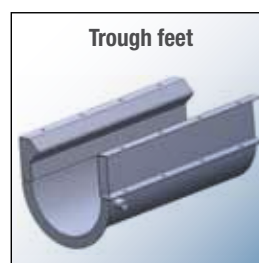
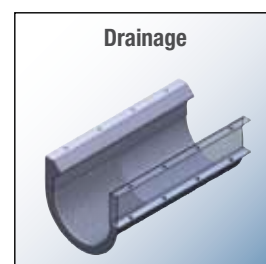
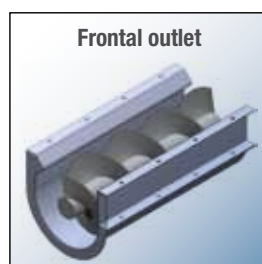
30% loading. For special sizes or configurations please contact a WAM® Sales Office

(L)\* see drawing above



## Accessories

- Range of end bearing assemblies complete with suitable shaft seals
- Flush outlet
- Bolted modular covers (inlet section with incorporated spout)
- Safety grid
- Overload and inspection hatches
- Flanged draining systems
- Support and Fastening Trough feet
- Washing nozzles



## Applications

