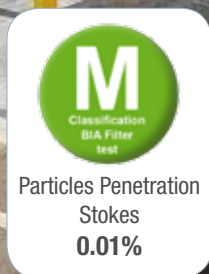
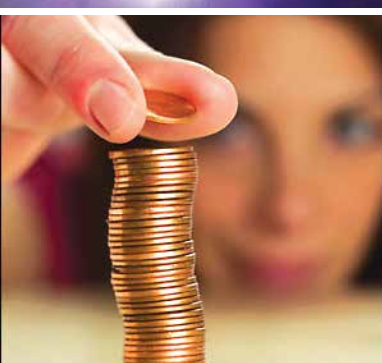


Fume & Dust Filters For Sheet Metal Processing Machines

TECU R02

RECOFIL™ | EASYFILL™



IMPROVES FILTRATION PERFORMANCE, REDUCES MANAGEMENT COSTS, KEEPS WORK ENVIRONMENT SAFE AND CLEAN

TECU R02 is a collector designed for suction filtration of fumes and dust generated by metal processing machines: plasma cutting, laser cutting, flame cutting and shot blasting.

Due to negative pressure created by the filter fan, fume is sucked through special cartridge filter elements inside the collector casing which retain polluting particles hazardous to health.

On request, TECU collectors can be equipped with the accessories RECOFIL™ and EASYFILL™ for automatic recovery and collection of the filtered dust in bulk bags.

Technical Features

- Filter surface from 104 to 624 m² (1,120 to 6,720 sq ft)
- Air jet cleaning system with “Full Immersion” solenoid valves integrated in aluminium air tank
- Filter media with nanofibre surface treatment for cutting or welding fume and grinding dust applications
- Powder-coated mild steel collector casing
- Powder-coated mild steel dust collecting hoppers with snap lock system for bucket or automatic RECOFIL™ Dust Recovery System

Integrated centrifugal fan

available only for
TECU equipped with up
to 8 cartridges *

Cylindrical cartridges

323 mm in diameter,
830 mm long

Dust collecting hopper

with snap lock system

Built-in coarse dust pre-separator

Control Device

Multi-functional
electronic
control panel
with electronic
differential
pressure meter



* Units equipped with more than 8 cartridges require a separate ground-mounted suction fan.



Benefits

Combined system: TECU R02 + RECOFIL™ + EASYFILL™

TECU R02 performs best in combination with the automatic RECOFIL™ Dust Recovery System and the EASYFILL™ Bulk Bag Filling System.



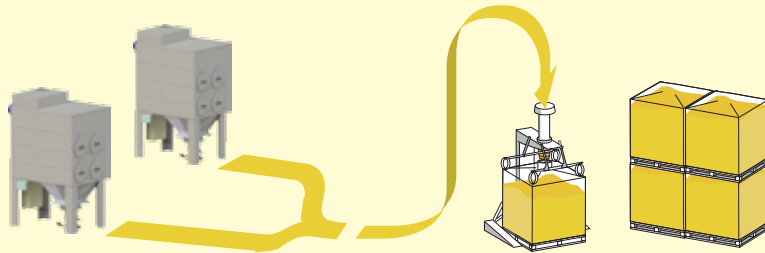
SAFE & ECO-FRIENDLY SYSTEM



- ✓ Built-in coarse dust pre-separator
- ✓ Additional spark trap minimises fire hazard
- ✓ Operator never in contact with dust
- ✓ Keeps work environment clean
- ✓ Avoids dust dispersion

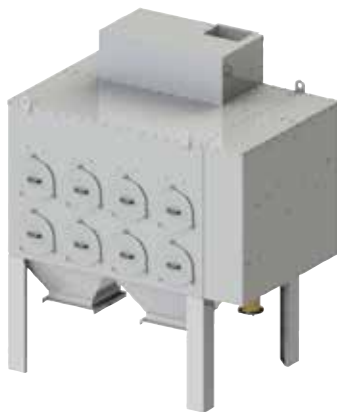


SAVINGS IN TIME



- ✓ RECOFIL™ Dust Recovery System can manage 2 TECU Filters simultaneously
- ✓ Reduced maintenance costs
- ✓ Reduced operating costs from first year

TECU R02



- ✓ M Classification BIA Filter Test: Particle Penetration Stokes 0.01%
- ✓ Emissions within standard limits
- ✓ Improved performance, compact design
- ✓ Quick and easy maintenance

RECOFIL™

AUTOMATIC DUST RECOVERY SYSTEM *



- ✓ Reduced dust management costs
- ✓ Low energy consumption
- ✓ No labour involved in waste dust disposal
- ✓ Universal quick release flange for all hopper types

EASYFILL™

BULK BAG FILLING SYSTEM INCLUDING VENTING FILTER *



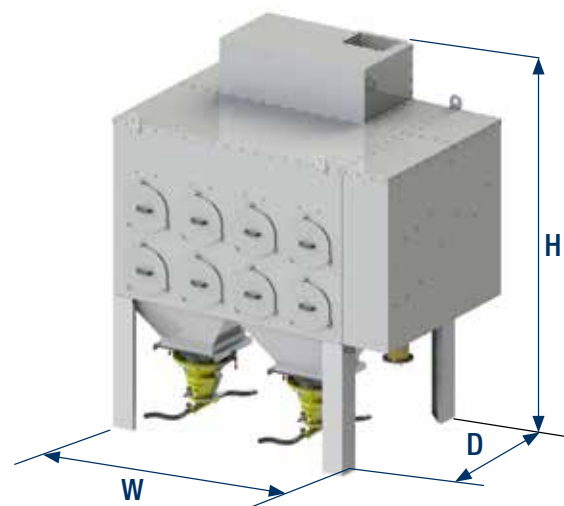
- ✓ Minimised dust recovery and disposal costs
- ✓ Reduced logistics and storage costs
- ✓ Low assembly costs (adjusts to different bulk bag sizes)
- ✓ Keeps work environment clean
- ✓ Safeguards operator
- ✓ Suits all types of dust collectors

* Refer to specific brochures for more detailed information.

Configurations

Max. air flow [m³/h]	Nbr of cartridges	TECU R02	Filtering surface [m²]	Fan position	Fan capacity [kW]	W (mm)	D (mm)	H (mm)
4,000	4	FLT041047DI	104	I	4.0	1,370	1,945	2,520
4,000	4	FLT041048DI	104	I	5.5	1,370	1,945	2,520
4,000	4	FLT041049NI	104	I	7.5	1,370	1,945	2,520
4,000	4	FLT04104R	104	N	-	1,370	1,600	2,210
6,000	6	FLT061560NI	156	I	7.5	1,466	1,984	3,020
6,000	6	FLT06156ANI	156	I	9.2	1,466	1,984	3,020
6,000	6	FLT06156R	156	N	-	1,466	1,540	2,710
8,000	8	FLT08208BOI	208	I	11.0	2,420	2,039	2,645
8,000	8	FLT08208COI	208	I	15.0	2,420	3,029	2,645
8,000	8	FLT08208R	208	N	-	2,420	1,550	2,010
12,000	12	FLT12312COTL	312	GL	15.0	5,055	2,030	2,810
12,000	12	FLT12312EOTL	312	GL	18.5	5,055	2,030	2,810
12,000	12	FLT12312COTR	312	GR	15.0	5,055	2,030	2,810
12,000	12	FLT12312EOTR	312	GR	18.5	5,055	2,030	2,810
12,000	12	FLT12312R	312	N	-	2,530	1,650	2,810
24,000	24	FLT24624FOT	624	GL	22.0	5,060	1,650	2,810
24,000	24	FLT24624R	624	N	-	5,060	1,650	2,810

Table data may be subject to review.



I - Integrated GR - Ground installation RIGHT
N - Not present GL - Ground installation LEFT

202001214 March 2016 Rights reserved to modify technical specifications.

