

## K-Impact Conveyor Slider Bars

### Belt support and protection

K-Impact Conveyor Slider Bars are principally used on load zone conveyor impact cradles and belt support systems. They are designed to be interchangeable and are compatible for use with most types of impact cradles and belt supporting structures. K-Impact Conveyor Slider Bars provide belt support and vital belt protection, whilst offering effective low-friction belt support.

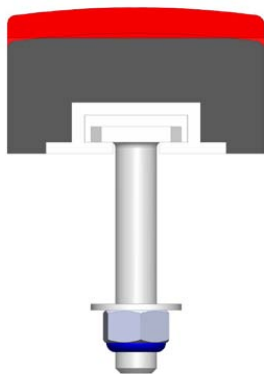
The construction of the K-Impact Conveyor Slider Bars uses an advanced composite of rubber or polyurethane body and low friction UHMWPE sliding surface bars with tapered leading edges and rounded corners to protect the belt from potential damage. A moulded aluminium “T” track along the length allows for the purpose fitting Tee bolts.

Our range includes slider bar options for light to medium duty 55mm and heavy duty 77mm. The full dimensional details and including T bolt sizes are available on request.

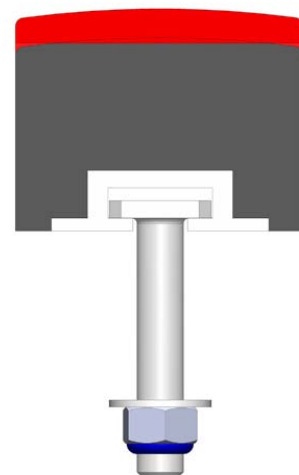
K-Impact Conveyor Slider Bars are also available in Fire Resistant and Anti-Static (FRAS) approved bars, available to meet underground coal conveyor applications.

#### Key Benefits:

- Easy installation and removal
- Rounded edges for belt protection
- 12mm UHMWPE sliding belt surface
- Tapered leading edges for bi-directional belts
- Interchangeable with other makes



55mm high, rubber body  
K-Impact Conveyor Slider Bar



77mm high, rubber body  
K-Impact Conveyor Slider Bar

## K-Impact Conveyor Slider Bars



Images of K-Impact Conveyor Slider Bars installed on an impact bed.

Contact our Sales Engineering Team for details of which slider bar suits your specific application needs.

Part Number	Description	Body	Bar Size (mm)	Weight (kg)
IMP-SLBAR-55-FR-I	IMPACT BAR - 55 x 100 x 1500mm	Rubber	55 x 100 x 1500	9.5
IMP-SLBAR-77-FR-I	IMPACT BAR - 77 x 100 x 1400mm	Rubber	77 x 100 x 1400	11.9
IMP-CP-IB-3455-A-G69	IMPACT BAR - LOAD ZONE - 77 x 100 x 1400mm	Polyurethane	77 x 100 x 1400	10.9
IMP-BAR55x100x1500AS (Assembly)	INCLUDES: 1-OFF IMPACT BAR (IMP-SLBAR-55-FR-I) 4 OFF M12x40 BOLT, WASHER AND NYLOC NUT (FAS-T-BOLT M12x40)	Rubber	55 x 100 x 1500	9.7
IMP-BAR77x100x1400AS (Assembly)	INCLUDES: 1-OFF IMPACT BAR (IMP-SLBAR-77-FR-I) 3 OFF M16x90 BOLT. WASHER AND NYLOC NUT (FAS-T-BOLT M16x90)	Rubber	77 x 100 x 1400	12.5