

K-Commander Self Centring Idler

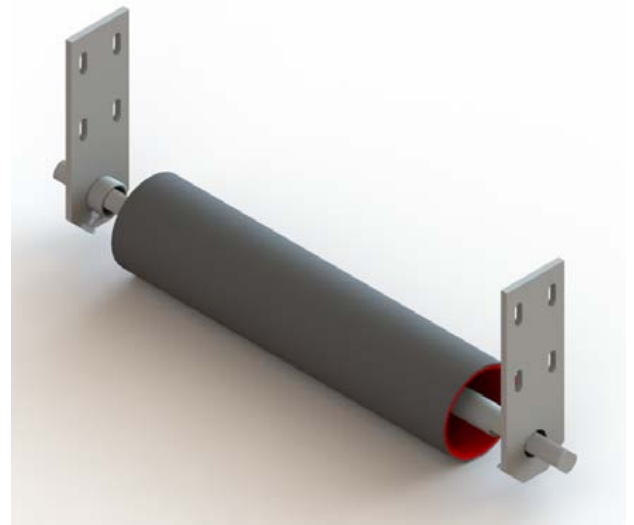
Return Side Conveyor Belt Tracking

The K-Commander Self Centring Idler is designed to promote correct conveyor belt alignment. The unique engineered action of the central ball and socket link is encased in a rubber covered steel tube. This protects the internal mechanics and ensures that the belt runs true. A key benefit of the K-Commander is that it tracks without any external moving parts, pivots or service rollers and therefore requires no additional maintenance.

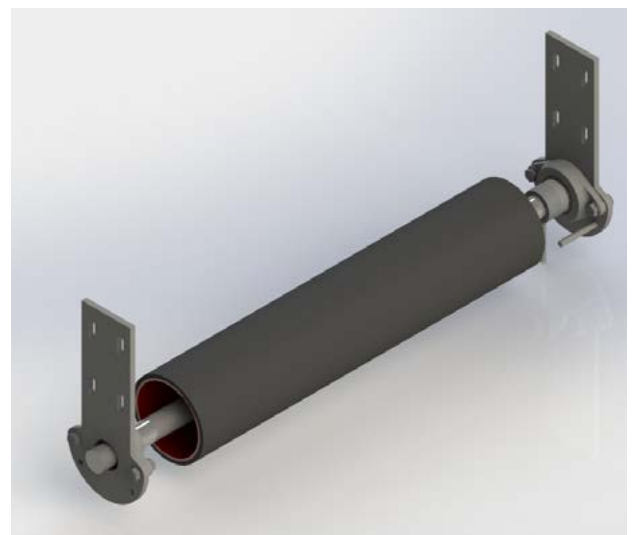
The installation of the K-Commander is only for the return side, being the most critical surface of the belt in order to maintain belt alignment. Misaligned or wandering conveyor belts travelling too far either side of the belt's centre, are often the cause of many other problems associated with bulk materials handling. This includes material spillage and reduced performance expectations of the conveyor belting and conveyor structure.

Key features:

- Rubber lagging for extreme wear resistance.
- No external pivoting parts or servo rollers.
- Heavy duty construction.
- Adjustable mounting brackets for ease of installation.
- Lagging can be replaced / reconditioned.
- Available in single or reversing models.



Single direction model shown.



Reversing model shown.

K-Commander Self Centring Idler

Part Number	Direction	Belt Width	A	B	C
K-TRA-SC-0450-S	Single	450/500	540	700/750	900
K-TRA-SC-0600-S	Single	600/650	690	850/900	1050
K-TRA-SC-0750-S	Single	750/800	840	1000/1050	1200
K-TRA-SC-0900-S	Single	900/1000	1040	1150/1200	1400
K-TRA-SC-1050-S	Single	1050	1090	1250	1450
K-TRA-SC-1200-S	Single	1200	1240	1450	1600

Part Number	Direction	Belt Width	A	B	C
K-TRA-SC-0450-R	Reversing	450/500	540	700/750	900
K-TRA-SC-0600-R	Reversing	600/650	690	850/900	1050
K-TRA-SC-0750-R	Reversing	750/800	840	1000/1050	1200
K-TRA-SC-0900-R	Reversing	900/1000	1040	1150/1200	1400
K-TRA-SC-1050-R	Reversing	1050	1090	1250	1450
K-TRA-SC-1200-R	Reversing	1200	1240	1450	1600

