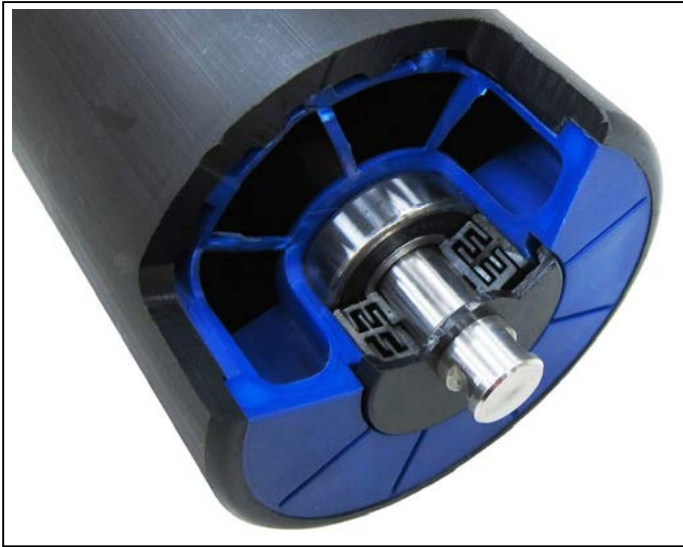


## K-Polymer® Conveyor Roller



### Lightweight & Corrosion Resistant

The K-Polymer® Conveyor Roller is the new generation heavy-duty light-weight, alternative to a steel shell roller. It offers the best solution to roller failure caused by corrosion in humid and wet conditions. Although the roller is light-weight (approximately 50% that of steel) it is engineered using modern polymer and fibre (HDPE) materials to substantially out last steel. Comparative wear test proof is available on request.

The light-weight design means that risk of back injury is significantly reduced as manual handling is made easier, especially when carrying up steep inclines.

K-Polymer® Conveyor Rollers are in most cases self-cleaning by not allowing carryback to stick to the non-porous shell, causing mistracking, potential, spillage or belt wear.

Rollers are interchangeable with existing steel rollers by having the same diameters, bearing and shaft sizes. K-Polymer® Conveyor Rollers are installed in almost every type of belt conveying application. They are fast becoming the preferred option over conventional steel rollers. Many users report the significant noise reduction compared to steel rollers and tests document their quiet operation.

Our standard stock range covers conventional interchangeable shaft Australian configurations but all made-to-order dimensions can be accommodated. All components are recyclable. Any used rollers maybe returned to us for recycling.

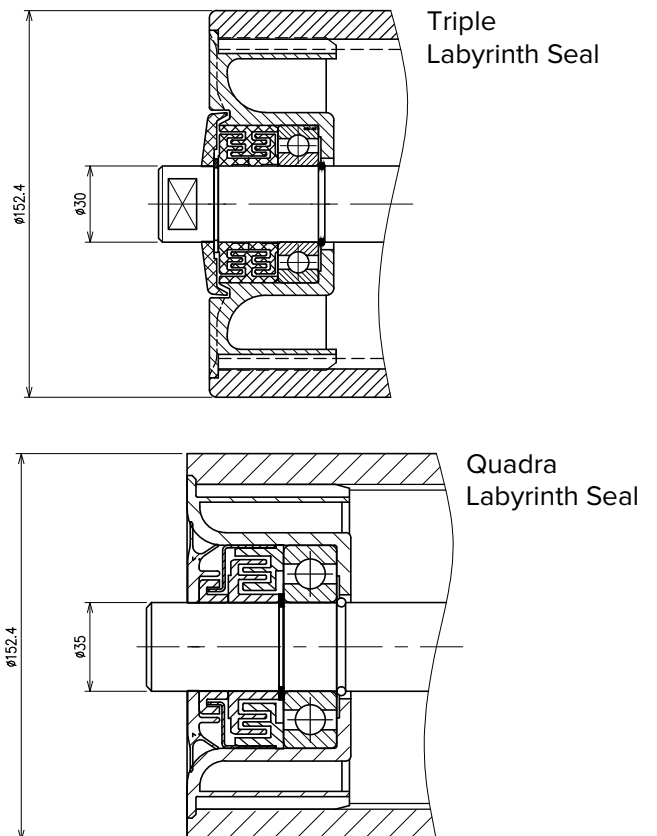
Key-benefits:

- 50% less weight than steel
- Belt friendly
- Quiet
- Corrosion, Wear, and UV Resistance

# K-Polymer® Conveyor Roller



Shell Diameter (mm)	Shaft Diameter at Bearing (mm)	Bearing Series	Labyrinth Seal
89	20	6204	Triple
102	20	6204	Triple
102	25	6205	Triple
108	20	6204	Triple
108	25	6205	Triple
114	20	6204	Triple
114	25	6205	Triple
127	20	6204	Triple
127	25	6205 or 6305	Triple
127	30	6206	Triple
133	25	6205 or 6305	Triple
133	30	6206	Triple
140	25	6205 or 6305	Triple
140	30	6206	Triple
152	25	6305	Quadra
152	35	6207 or 6307	Quadra
159	30	6306	Triple
159	35	6207	Triple



**Belt Range:** 400 – 2000mm, Trough and Return.  
**Roller Diameters:** 89mm, 102mm, 108mm, 114mm, 127mm, 133mm, 140mm, 152mm, 157mm, 159mm. Other sizes available upon request.  
**Shaft Material:** AISI1015 (S15C) Carbon Steel.  
**Bearing Type:** NTN Brand and 2RS. Other brands available upon request.  
**Test Results:** Rim Drag, TIR, Waterproof and Dust Proof, Dynamic Unbalanced Measurements available upon request.  
*Details subject to change without notice.*