

K-Redi-Liner® KP Dual Duro

Extra heavy duty modular wear liner

K-Redi-Liner KP Dual Duro is a bolt in system that can be arranged into any wear pattern. The unique combination of the 63 Duro for shock absorption combined with the cut/tear resistance of 93 Duro creates a new generation of high performance liner.

The K-Redi-Liner KP Dual Duro should be considered when the application exceeds the duty limits of KC, KS and KH Redi-Liners.

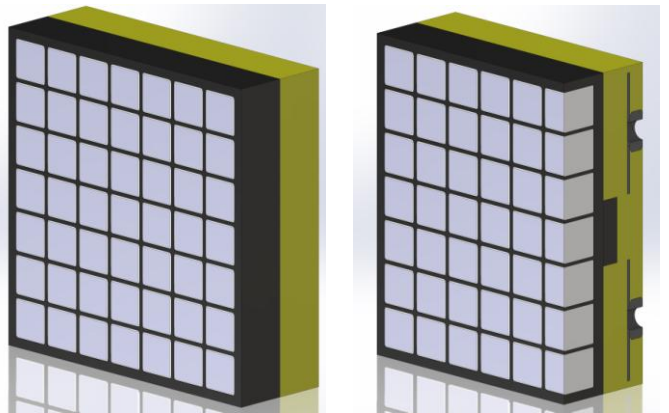
The application is suitable for conveyor transfer points, high wear chutes, screen discharge and feed liners. Kryptane® polyurethane combined with ceramic cubes will provide extra heavy duty wear protection. This practical lining system can be arranged combining the ceramic polyurethane composite modules for the main wear area and solid polyurethane for the surrounding area.

Key Features

- Ceramic cube thickness KP 38 x 38 x 32mm
- Standard panel 304L x 304W x 102D mm
- Available in custom sizes
- Dual Duro suspension formulas B93 / Y63
- 4 x 3/4" BTNI fastening attachment
- Quieter operation
- Lightweight compared to steel (OHS benefit)

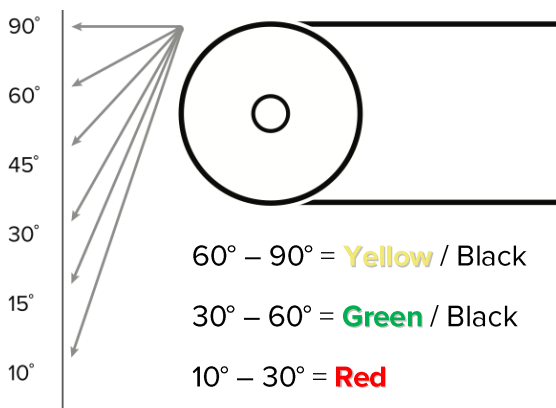
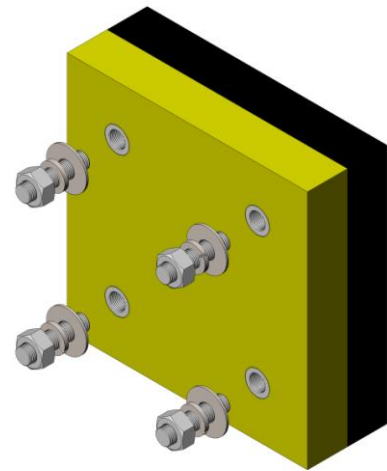
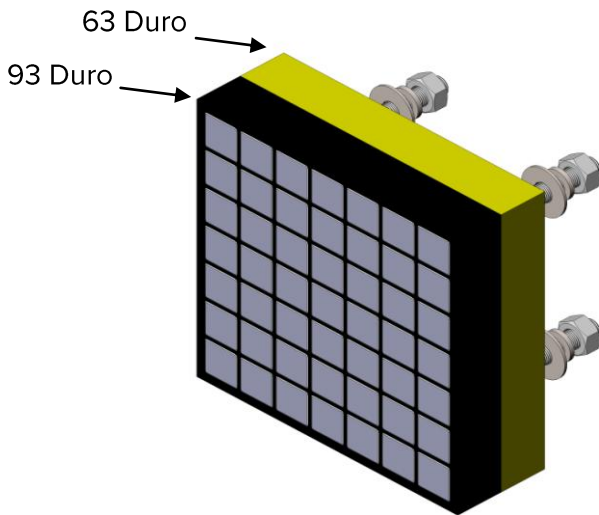


*Redi-Liner™ is a trademark of Argonics, Inc.
Kryptane® is a registered trademark of Argonics, Inc*



*Studs, nuts and washers supplied with liners
Each wear liner weighs 19.5kgs*

K-Redi-Liner® KP Dual Duro



K-Superline Black – 93 DURO SHORE A

Strong abrasion resistance to sliding, grooving and impact. Heavy product larger than 125mm lump size. Impact angle between 60° - 90°

K-Superline Yellow – 63 DURO SHORE

Highly elastic. Very high impact resistance. Impact angle between 60° - 90°